



Hydraulic Cylinders find their application in FLUID POWER when Force requirement is on the higher side. They are sturdier in construction as compared to pneumatic cylinders and are preferred when jerk free motions are required. These cylinders are available in different shapes & sizes to suit client applications.



Series 10 - Square construction assembled and bolting using Tie rods. Simple construction enables easy change of seals. Available in Bore sizes of 40 mm to 200 mm and pressure up to 220 Bar. Mounting accessories can be provided on such as Flange, Pivot, Foot brackets, Trunion etc. Cushioning possible on both ends.

Different types manufactured in this series.

Double Acting - Forward and return motion by oil.

Single Acting - Forward stroke by oil & return by load exerted on the piston rod.

SERIES 10 :

Features - Cushioning possible at both ends to reduce impact at the end of the stroke.

Material of construction -

Tube - Carbon Steel duly hard chrome plated.

Seals - Fabric reinforced.

Covers - Steel Piston - Steel.

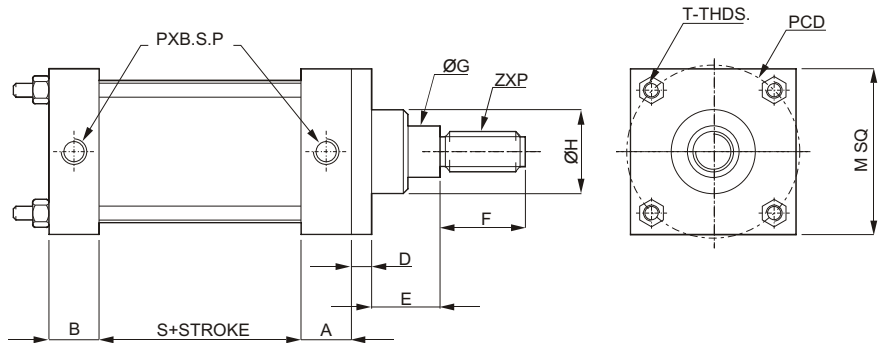
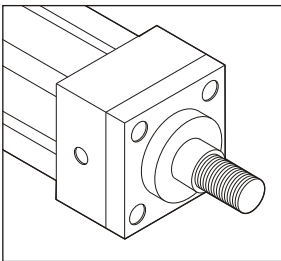
Piston Rod - En8 hard chrome plated.

Guide Bush - Gun Metal

Maxm operating pressure - 200 Bar Temperature Range - 85°c



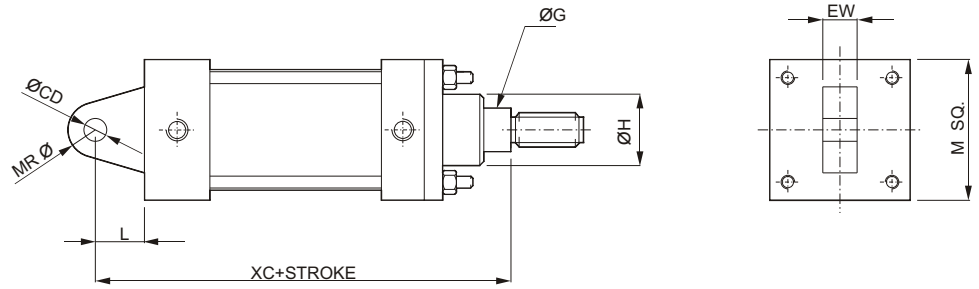
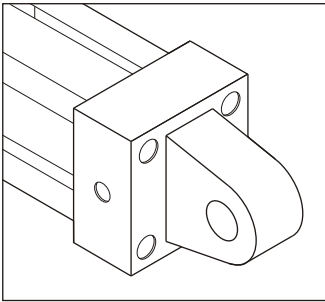
SERIES :10 HYDRAULIC CYLINDER : MOUNTING



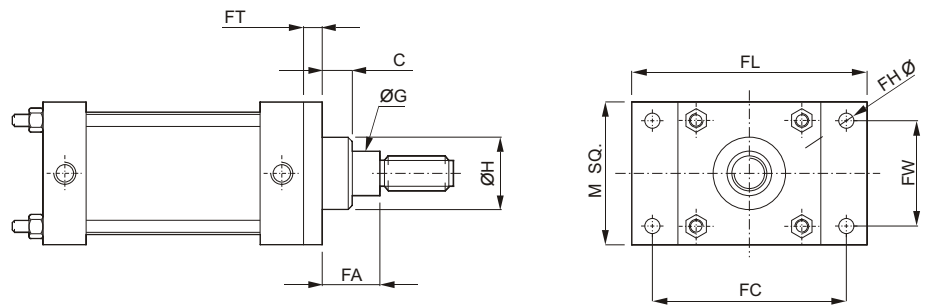
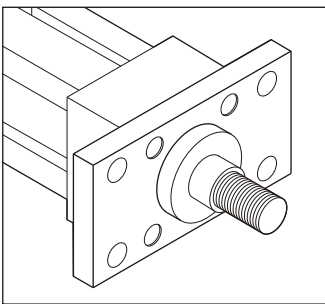
SERIES 10: DOUBLE ACTING HYDRAULIC CYLINDER DIMENSION													
BORE	GØ	ZXP	PXBSP	A	B	S	D	E	F	MSQ	HØ	PCD	T
40	18	M14X1.5P	1/4"	34	30	47	10	25	28	60	35	41.8	M8
50	25	M20X1.5P	1/4"	37	30	53	14	25	32	75	50	52.8	M12
63	35	M27X2P	1/2"	38	30	69	18	29	45	88	55	65	M12
80	45	M33X2P	3/4"	52	40	79	20	25	55	115	65	82.5	M16X2
100	50	M33X2P	3/4"	58	49	88	22	35	57	125	75	97	M16X2
125	56	M42X2P	3/4"	60	50	67	25	35	56	165	75	126	M22X1.5
160	70	M48X2P	3/4"	65	56	72	30	35	68	208	92	155	M27X2



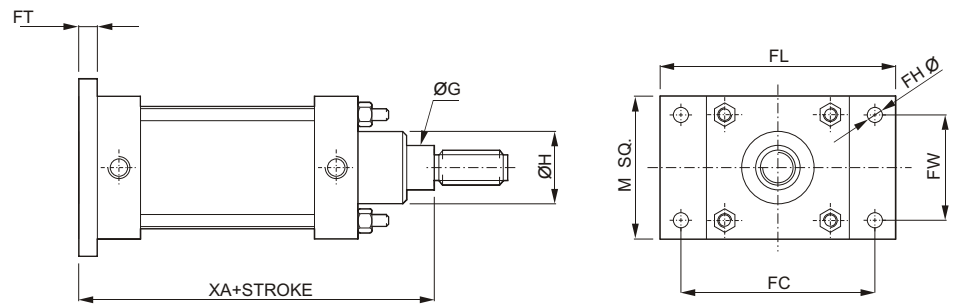
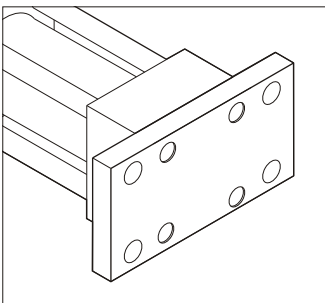
REAR PIVOT



FRONT FLANGE



REAR FLANGE



BORE	XC	CD	L	EW	HØ	GØ	M	MRØ	FA	C	FW	FC	FHØ	FL	FT	XA
40	167	14	22	20	30	18	60	17	22	7	41	87	11	115	10	155
50	193	20	36	30	50	25	75	22	23	7	52	106	13.5	140	14	171
63	226	20	36	30	55	35	88	22	29	9	65	117	14	142	18	208
80	256	25	40	38	65	45	115	32	25	5	83	149	18	182	20	236
100	307	36	55	50	75	50	125	45	35	10	97	162	17.5	210	22	274
125	307	45	64	60	85	56	166	50	32	8	126	208	22	260	28	271
160	326	50	70	70	110	70	208	55	32	10	155	253	26	320	30	286