

# Onsite Machining Solutions

## FLANGE FACING MACHINE

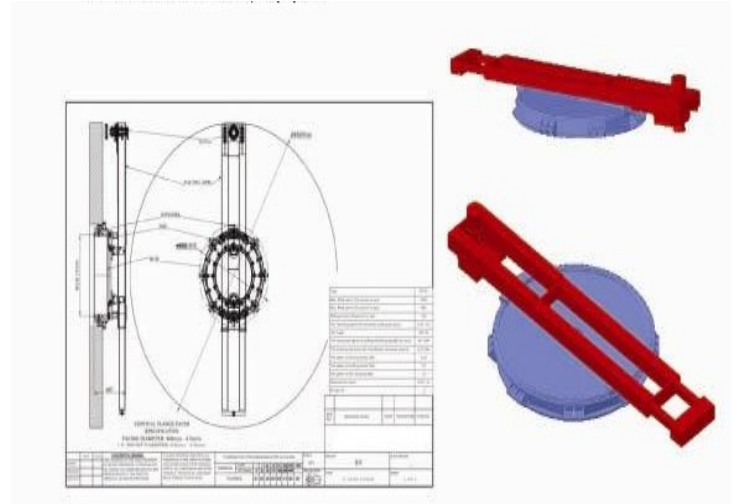
A modular portable machine for flange facing, grooving, and weld preparation. The flange facers are designed to machine full faced, raised face and gooved flanges having a minimum bore of 800mm and a maximum outside diameter of 4500 mm.

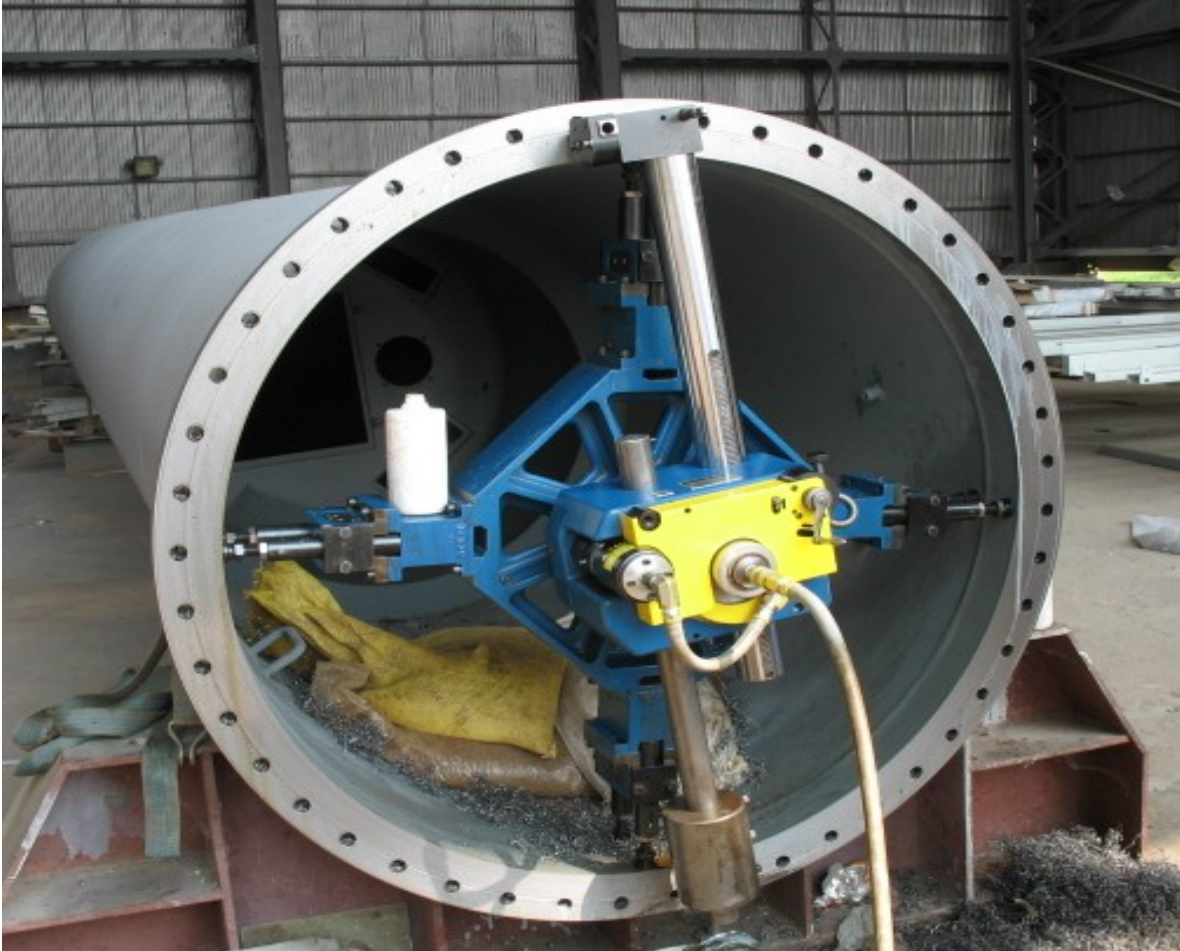
### FEATURES

- Modular construction \* I.D. & O.D. mounting
- Operates in any position \* Cuts all flange types
- Multiple surface finished \* Hydraulic drives

### MACHINE DESCRIPTION

The machines are constructed from the highest quality materials. It is designed to give machine shop accuracy, combined with ease of handling and portability in the below mentioned flange range. The machine consists of (4) main modules. The **Mounting Base** assembly enables the machine to be installed in the center of the flange. It consists of a cruciform body provided with four adjustable clamping jaw assemblies. The mounting base is installed and aligned prior to the turntable installation. The **Turntable Assembly** provides a rigid support for the air motors, gearbox and surfacing arm assembly. The upper part of the assembly provides the rotational movement for surfacing, while the lower part remains stationary, held in position by the mounting base assembly. The **Drive Arrangement** consists of two motors mounted directly into the ring gear, which in turn is mounted to the main bearing. The use of two motors enables the overall machine height to be reduced, evens out the torque and also acts as a backlash eliminator and crush drive. The **Feed Gearbox** is mounted on the turntable assembly providing a variety of cutting feeds for different applications. Drive input to the gearbox is derived from the main transfer gear. The gearbox provides four different feed rates selected by a push/pull selector. Traverse is also engaged by a push/pull selector, which gives traverse IN, traverse OUT and Neutral. The neutral position is used for manually positioning the tool post. The **Cutting Arm Assembly** is mounted on the turntable to provide a rigid structure to which the tool post is fixed. Feed in and out is provided by a lead screw, driven by the gearbox output gear. Feed rate is selected at the gearbox. Material, tooling and conditions permitting, the cutting arm assembly can achieve cuts to a maximum depth of 0.079" (2mm) without flange holes and 0.02" (0.5mm) with flange holes. This machine, which is manufactured in strict conformance to the ISO 9001 quality system.





**Flange facing to increase the productivity, using portable equipment.**

A-413, Safal Pegasus, Anandnagar Road, Prahladnagar, Ahmedabad – 380051, India  
Tele: +91 79 40209898 , Fax: +91 79 40067979 Email: [info@adroit-techna.com](mailto:info@adroit-techna.com)