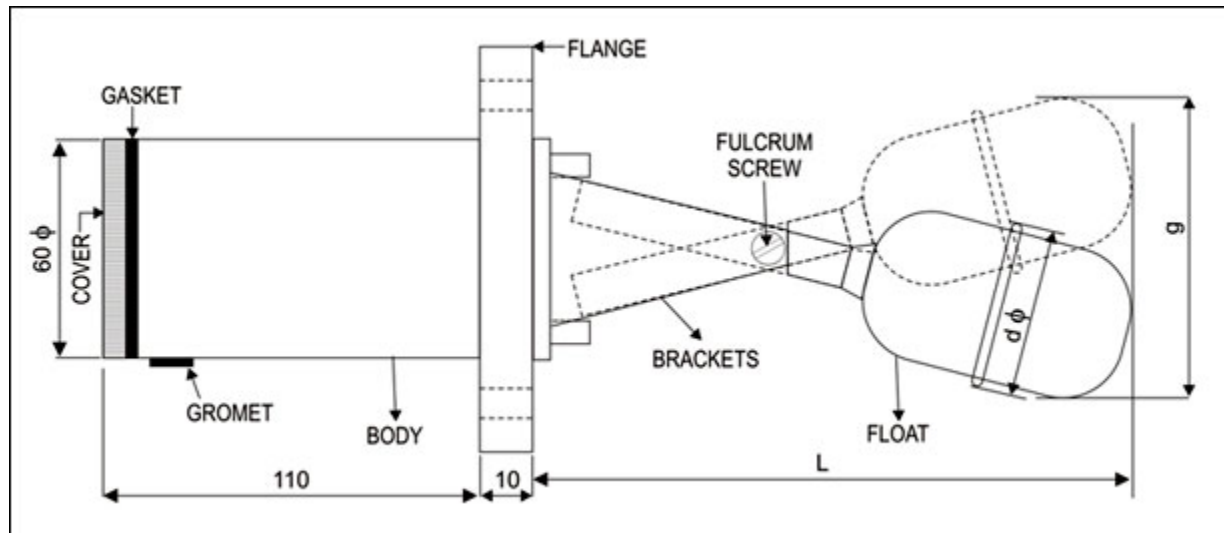


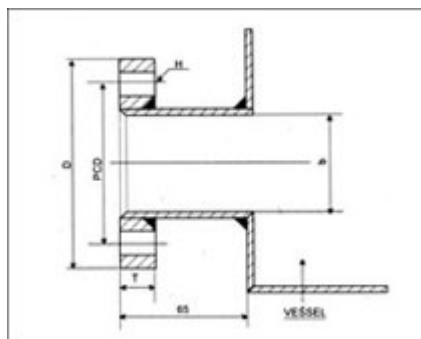
Dimension Models :

(MLS - 04 - F 82) & (MLS - 16 - F 82) (MLS - 04 - F 92 S) & (MLS - 04 - F 92) & (MLS - 16 - F92 S) & (MLS - 16 - F 92)

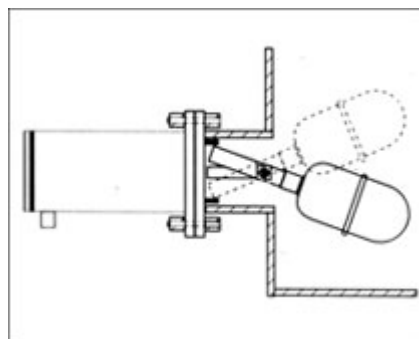


L = 165 mm, g = 80 mm, with d = 49 mm f Float.

* Applicable only for model MLS - 04/16 - F92, when 62 mm dia float is used, L = 240 mm, g = 135 mm, with d = 62 mm f



[Click To image View Enlarge](#)



[Click To image View Enlarge](#)

Technical Specification :

Mahalaxmi make Model (MLS-04-F82) or (MLS-04-F92S) side mounted magnetic Level Switch. Process connection- 82 or 92mm square flange with 4 bolt holes of 10/14mm dia on 82 or 92mm PCD respectively. Material of construction of flange, brackets, fulcrum screws, body and cover-SS 304(For wetted parts in SS 316 please denote by 16 instead of 04 in the Model). SS 316L float. 1 no SPDT microswitch having current rating 5 Amps at 230 VAC resistive. Differential between make and break-10mm approximately. Maximum working pressure 10 kg/sq.cm and temperature 250 deg C. Specific gravity down to 0.7. Cable entry neoprene gromet. Supplied with 1.5 Metre long 3-core PVC Cable.

NB: In case of Model MLS-04-F92 flange size shall be 120 mm dia round flange with 4 bolt holes of 14 mm on 92 PCD.

Optional :

Microswitch with current rating 10 Amps at 230 VAC res.
Adjustable differential upto approx-250 mm
With 2 microswitches i.e., 2NO + 2NC