

B-Link4

4 port basic rate ISDN network simulator

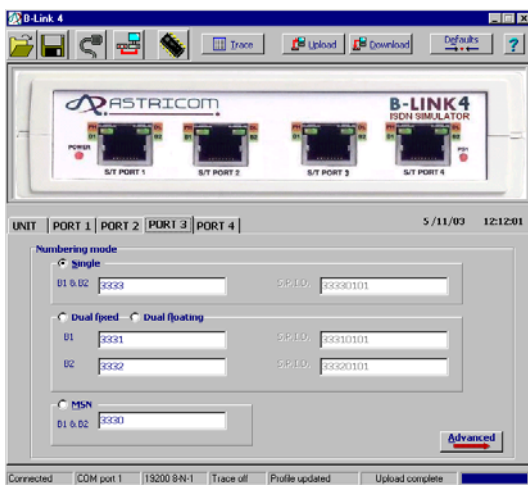
ISDN Wherever you need it!

- Simulate four independent ISDN lines on your desktop.
- Allows simple testing and demonstration of ISDN customer premises equipment.
- iDSL/Leased line simulation provides a capability for testing equipment using a 'permanent' (B Channels only) connection.
- Demonstrate your terminals working at their best across a 'perfect' ISDN line during trade shows, training courses or in the lab.
- Compact, lightweight and low cost.
- Provides a reliable connection with no call charges every time that you need it.



The **B-Link4** is our compact ISDN basic rate network simulator which simulates the provision of four independent ISDN lines on your desktop. Terminals may be connected together through the **B-Link4** as if they were connected through the 'real' ISDN network.

LED indicators on the front panel provide a clear indication of line status and activity during initial terminal connection and subsequent calls. The **B-Link4** performs all of the complex call handling procedures without the need for a PBX or Switch and therefore eliminates many of the problems associated with real lines.



Each **B-Link4** is supplied with a simple default configuration allowing you to plug and play. Intuitive Windows software supplied, allows you to easily configure and save any required changes. The software also provides access to the powerful protocol trace facility, which displays all messages transmitted and received on each line with user selectable filters for product test and development applications.

B-Link Models Available

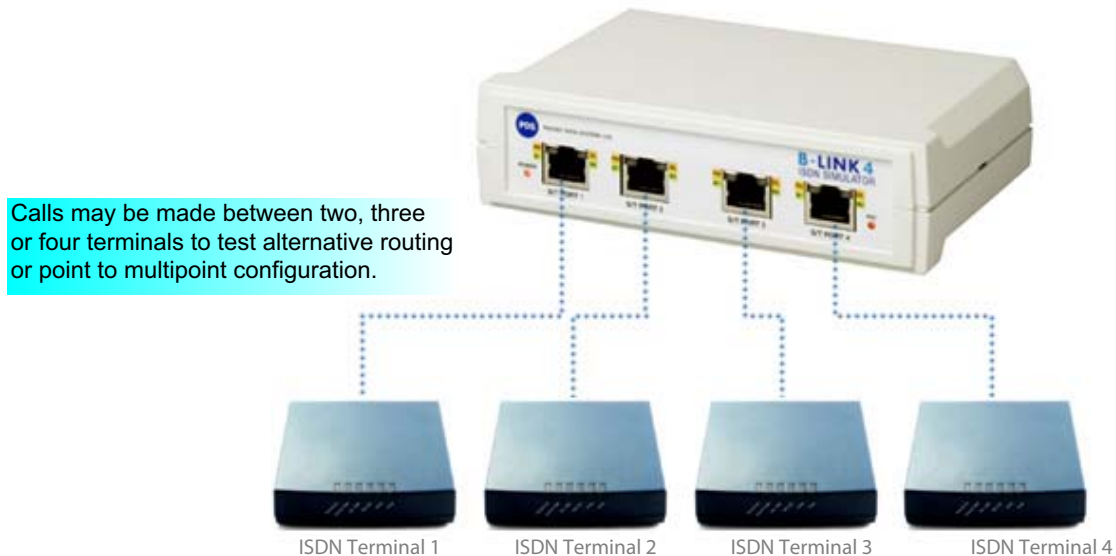
- **B-LinkU** - 2 basic rate ISDN ports (S/T & U interfaces)
- **B-Link4** - 4 basic rate ISDN ports (S/T interfaces)

Salicon Nano Technology Pvt. Ltd.

111, 1st Floor, Laxmi Deep Tower, Laxmi Nagar District Center, Delhi - 110092, INDIA,
Tel: 91-11-22525940, 40618940; Fax; 91-11-22525941; E-mail: info@salicontech.com; Web: www.salicontech.com

Typical Application

Using the B-Link4 to simulate the ISDN network between four terminals.



Specification

Switch Type Supported

ETSI Euro-ISDN (subset of CTR3) Also supports SPID's for National ISDN 1/2

Interface Type

S/T interface, 1 x RJ45 socket per port

LED Indicators

B1/ B2 Channel Active
PS1 Present
PH (Physical Layer - Layer 1) Active
DL (Datalink Layer - Layer 2) Active

Configuration Interface

Serial Port - 9 way D type

PC Operating System

(Note: PC required only for configuration)
Windows 95/98/NT4/2000/XP

PS1 (Power Source 1)

The B-Link4 supplies normal PS1 (phantom power) on each of it's basic rate ports.

Power Supply

Provided with a compact mains power adapter, please state preferred model - UK, European, US, Australian.

Accessories

Each B-Link4 is supplied with:
Windows configuration software on CD ROM (includes online HELP), Serial Lead, Power Adapter.

Size/Weight

15.3cm x 10.3cm x 4cm (6" x 4.25" x 1.75") 300g, (10oz)

Temperature

Operating/Storage: 0 - +40° C
Relative Humidity
90% non-condensing

Salicon Nano Technology Pvt. Ltd.

111, 1st Floor, Laxmi Deep Tower, Laxmi Nagar District Center, Delhi - 110092, INDIA,
Tel: 91-11-22525940, 40618940; Fax; 91-11-22525941; E-mail: info@salicontech.com; Web: www.salicontech.com