

DIMENSIONAL REVIEW : DOUBLE ACTING CYLINDER

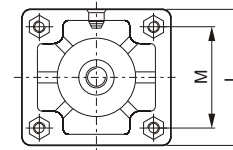
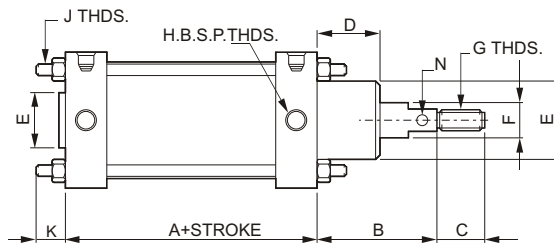
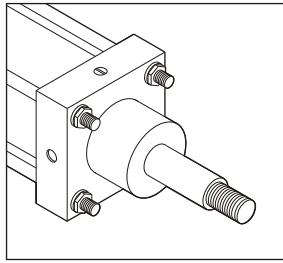


CHART A: DOUBLE ACTING SINGLE ENDED CYLINDER (TUBE MTRL : BRASS)

NOMINAL BORE					
	19*	25*	40	50	65(SR50B)
I.D. OF TUBE	19	25	38	54	65
MODEL NO.	50200	50201	50215	50202	50B214
N	NN-	NN-	5	5	6.5
M	19	24.25	36.5	47.5	58
L	29	38	55	63	76
K	16	19	20	20	25
J	M4	M5	M6	M6	M8
H	1/8" B.S.P.	1/8" B.S.P.	1/4" B.S.P.	1/4" B.S.P.	1/4" B.S.P.
G	M6 x 1	M8 x 1.25	M12 x 1.25	M12 x 1.25	M16 x 1.5
F	7.9	9.5	15.9	15.9	25.4
E	16	20	34	38	48
D	10	10	26	26	30
C	15	15	20	20	32
B	16.5	16.5	38	38	46
A	53.5	58	84	84	102

* : available in non-cushion type only

CHART B : DOUBLE ACTING SINGLE ENDED CYLINDER (STEEL TUBE)

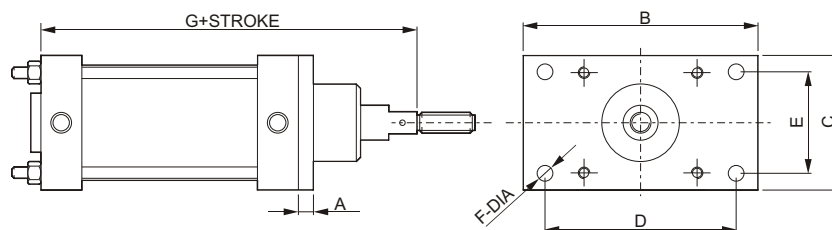
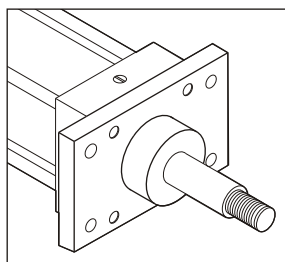
BORE								
	65	75	100	125	150	200	250	300
I.D. OF TUBE	65	81	105	130	157	208	258	310
MODEL NO.	50214	50203	50204	50205	50206	50208	50210	50212
N	6.5	6.5	6.5	8	8	8	10	10
M	60	70.5	88	112	126	170.5	210	247
L	80	92	122	152	172	230	286	335
K	25	30	30	35	35	45	50	55
J	M8	M10	M10	M12	M12	M20	M20	M24
H	1/4" B.S.P"	1/2" B.S.P"	1/2" B.S.P"	1/2" B.S.P"	1/2" B.S.P"	3/4" B.S.P"	3/4" B.S.P"	3/4" B.S.P"
G	M16 x 1.5	M20 x 2.5	M20x2.5	M24x3	M24x3	M30x3.5	M42x4.5	M42x4.5
F	25.4	25.4	25.4	35	35	38	50.7	50.7
E	48	48	55	64	64	70	90	90
D	30	35	35	40	44	50	55	55
C	32	32	32	45	45	56	68	68
B	46	51	51	58	62	68	75	75
A	102	119	119	132	133	161	204	204

Note: Piston rod diameter and threads are subject to change for stroke lengths above 1200 mm stroke. The same will be as per mutual agreement between client and vendor. Separate dimensional drawing will be submitted by us.

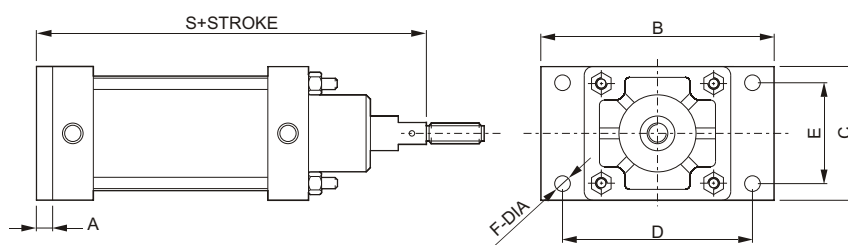
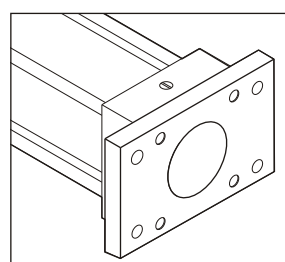
PNEUMATIC CYLINDER : MOUNTING DETAILS



FRONT FLANGE MOUNTING



REAR FLANGE MOUNTING

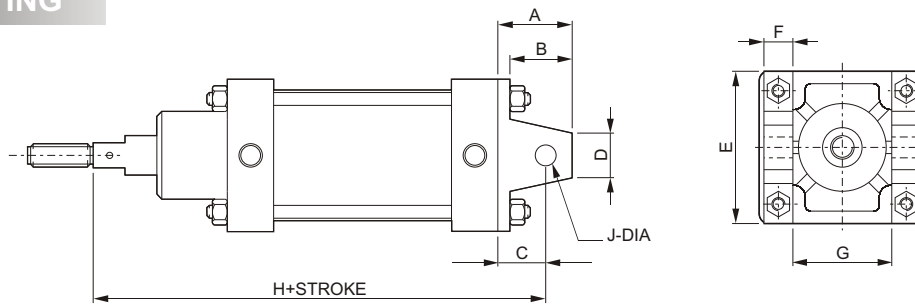
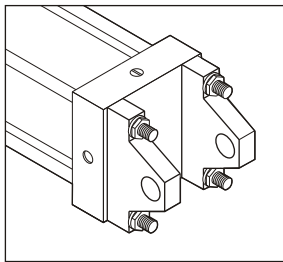


BORE	A	B	C	D	E	F	G	S
19	5	53	29	43	19	5.5	70	76
25	5	62	38	52	28	5.5	74.5	80.5
40	10	80	50	67	36.5	6.5	122	132
50	10	102	63	84	45	8.5	122	134
65	13	140	80	110	56	10.5	148	160
75	13	140	92	116	68	10.5	170	183
100	13	160	117	137	93	10.5	170	183
125	19	160	150	170	112	12.5	186	205
150	19	216	174	190	126	12.5	195	214
200	25	315	220.5	265	170.5	21	229	254
250	30	360	267	310	210	21	279	309
300	30	450	310	385	247	25	279	309

PNEUMATIC CYLINDER : MOUNTING DETAILS

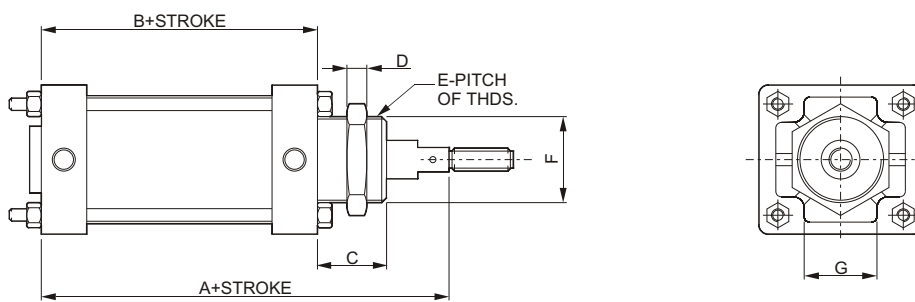
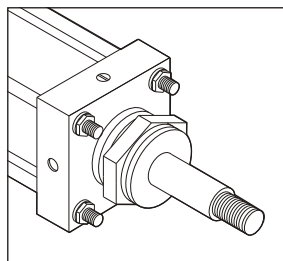


REAR CLEVIS MOUNTING



BORE	A	B	C	D	E	F	G	H	J
19	19	–	12.5	16	29	8	S.P.	82.5	6
25	22	–	13	20	38	10	S.P.	87.5	8
40	35	20	25	16	50	9.5	27.5	147	12
50	37	23	25	16	63	9.5	38.5	147	12
65	46	30	30	26.6	80	15	45	178	16
75	49	36	32	22	92	16	54.5	202	20
100	55	36	38	25	114	16	72	208	20
125	70	45	45	35	150	22	90	234	25
150	70	45	45	41	160	22	103	240	25
200	85	55	50	50	215	38	132	279	32
250	115	77	75	64	270	38	172	354	38
300	115	77	78	64	316	38	197	354	38

NECK MOUNTING

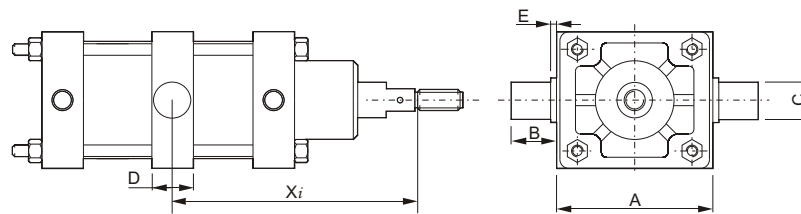
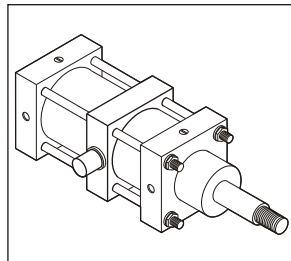


BORE	A	B	C	D	E	F	G
19	79	53.5	19	7	1.5	10	24
25	83.5	58	19	7	1.5	20	30
40	122	84	26	9.5	2	34	50
50	122	84	26	9.5	2	38	50
65	148	102	30	9.5	2	38	50
75	170	119	35	9.5	2	48	60
100	170	119	35	9.5	2	55	65

PNEUMATIC CYLINDER : MOUNTING



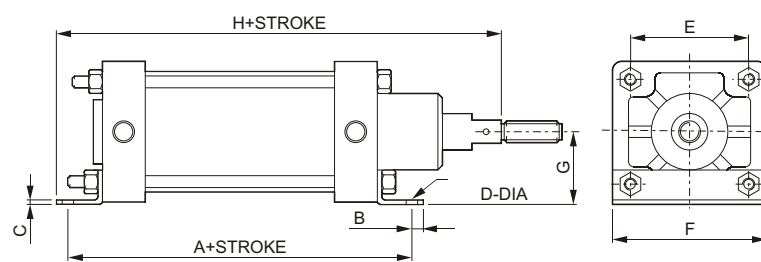
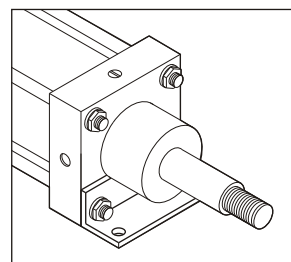
INTERMEDIATE TRUNION



X_i : to be specified by client

BORE	A	B	H	D	E
50	70	15	15	18	0
65	80.5	20	20	25	0
75	105	25	20	25	0
100	130	30	25	32	0
150	185	40	35	38	0
250	290	50	50	52	2

FOOT MOUNTING



BORE	A	B	C	D	E	F	G	H
19	NIL	NIL	NIL	NIL	NIL	NIL	NIL	NIL
25	90	7	2	5.5	24.25	38	21.6	97.5
40	122	9	3	6.5	36.5	50	29	150
50	134	10	3	8.5	45	63	36	157
65	152	10	3	8.5	60	80	45	190
75	179	12	4	10.5	70.5	92	52	212
100	179	12	4	10.5	88	114	63	212
125	195	16	6	12.5	112	145	80	220
150	205	16	6	12.5	126	160	87	247
200	252	22	9.5	21	170.5	215	112	296.5
250	295	22	12.7	21	210	260	140	346
300	312	26	12.7	25	247	300	164	359