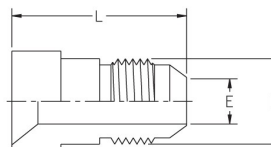


37° FLARE REDUCING ADAPTOR

Flare Tube end to Reduce size SAE 070123

PART NUMBER INFORMATION: FLRA – Body only

FLARA – Assembled Fitting (Body, Sleeve & Nut)



T Tube OD		B UNF	Dimensions				Part No.	
inch	inch/mm		inch	mm	inch	mm	Inch	Metric
3/8 to 1/4;	3/8 to 6	7/16x20	0.172	4.4	0.97	24.6	FLRA-375-250	FLRA-375-6
1/2 to 1/4;	1/2 to 6	7/16x20	0.172	4.4	1.00	25.4	FLRA-500-250	FLRA-500-6
1/2 to 3/8;	1/2 to 10	9/16x18	0.297	7.5	1.00	25.4	FLRA-500-375	FLRA-500-10
5/8 to 1/4;	5/8 to 6	7/16x20	0.172	4.4	1.03	26.2	FLRA-625-250	FLRA-625-6
5/8 to 3/8;	5/8 to 10	9/16x18	0.297	7.5	1.03	26.2	FLRA-625-375	FLRA-625-10
5/8 to 1/2;	5/8 to 12	3/4x16	0.391	9.9	1.44	36.5	FLRA-625-500	FLRA-625-12
3/4 to 1/4;	3/4 to 06	7/16x20	0.172	4.4	1.09	27.7	FLRA-750-250	FLRA-750-6
3/4 to 3/8;	3/4 to 10	9/16x18	0.297	7.5	1.09	27.7	FLRA-750-375	FLRA-750-10
3/4 to 1/2;	3/4 to 12	3/4x16	0.391	9.9	1.19	30.2	FLRA-750-500	FLRA-750-12
3/4 to 5/8;	3/4 to 16	7/8x14	0.484	12.3	1.66	42.1	FLRA-750-625	FLRA-750-16
7/8 to 3/8;	7/8 to 10	9/16x18	0.297	7.5	1.13	28.7	FLRA-875-375	FLRA-875-10
7/8 to 5/8;	7/8 to 16	7/8x14	0.484	12.3	1.33	33.7	FLRA-875-625	FLRA-875-16
7/8 to 3/4;	7/8 to 18	1-1/16x12	0.609	15.5	1.84	46.7	FLRA-875-750	FLRA-875-18
1 to 3/4;	01 to 18	1-1/16x12	0.609	15.5	1.47	37.3	FLRA-1000-750	FLRA-1000-18
1 to 7/8;	01 to 20	1-3/16x12	0.719	18.3	1.91	48.5	FLRA-1000-875	FLRA-1000-20

Dimensions are for reference only, and are subject to change without notice.