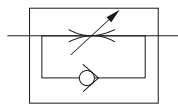


MISCELLANEOUS CONTROL VALVE

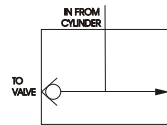


FLOW CONTROL VALVE :



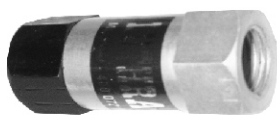
PIPE SIZE : 1/8", 1/4", 3/8", 1/2" B.S.P.
VALVE BODY : Aluminium (Hard Anodised)
PRESSURE : 0 TO 10 Bar
ILLUSTRATION : Free unrestricted flow of air is in the direction of arrow on component. While in the opposite direction, flow can be regulated by suitable adjusting the knob provided.

QUICK EXHAUST VALVE :



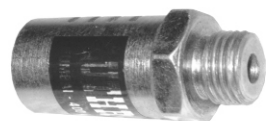
PIPE SIZE : 1/4", 3/8", 1/2", B.S.P
VALVE BODY : Aluminium (Hard Anodised)
Seals : Nitrile
FUNCTION : Quick retraction of cylinder
INSTRUCTION : Use on exhaust of cylinder

NON RETURN VALVE :



PIPE SIZE : 1/8, 1/4", 3/8", 1/2", B.S.P
VALVE BODY : Aluminium (Hard Anodised)
FUNCTION : One way non-return
 One way free-flow

AIR SILENCER :



PIPE SIZE : 1/4", 1/2", 3/8", B.S.P
TYPE : With or without needle valve
FUNCTION : Noise control & controlling cylinder speed
INSTRUCTION : Use on exhaust of valve