

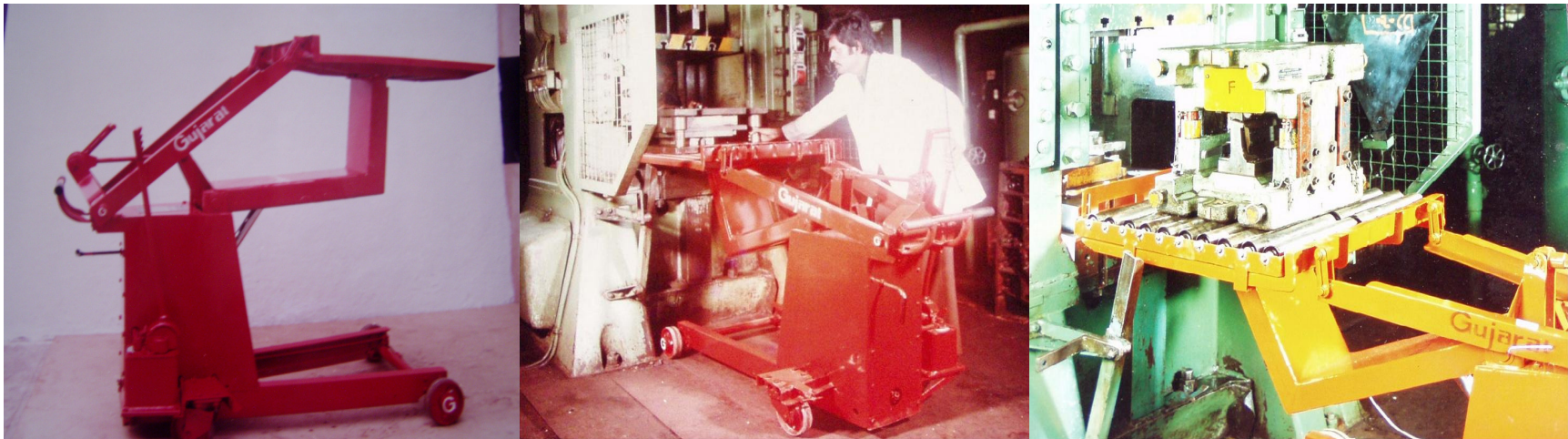
Shree Modi Materials Handling Company & Modi Intruc Corporation



**Product Literature:
“Gujarat” Hydra Truck**

■ 'Gujarat' Hydra Truck (Loading – Unloading Truck)

- ❑ The Versatile, Portable & Rugged Loading – Unloading Equipment!
- ❑ Platform has an Over hang over the straddle legs. Facilitates Loading-Unloading.
- ❑ Adjustable platform which may be tilted backwards and forwards
- ❑ Platform can be provided with Roller Conveyors/Balls Transfer Table with locking arrangement



❑ Specifications:

- ❑ Capacity: 500 & 1000 Kgs
- ❑ Elevated Height: 1420 mm.
- ❑ Platform Specs: 780 mm * 780 mm
- ❑ Lowered Height:
 - 6" Wheel: 180mm
 - 8" Wheel: 240 mm
- ❑ Overall Length:
 - Platform at Top Position: 1635 mm
 - Platform at Middle Position: 1870 mm
 - Platform at Bottom Position: 1575 mm



■ Applications:

- Die & Tool Handling on Shop Floors (Press, CNC, SPM etc)
- Warehouses
- Handling & unloading lorries
- Lifting & lowering machine parts, Coils, goods, cases, parcels, painting forms, drums etc.



Contact us to know how 'Gujarat' can minimize your 'Total Cost of Ownership'(TCO) for Materials Handling Equipment

"GUJARAT" MATERIAL HANDLING EQUIPMENTS

Manufactured by:

SHREE MODI MATERIALS HANDLING CO.

MODI INTRUC CORPN.

Plot No. 89, Road No. 6,

Udhna Udyognagar , Udhna,

Surat-394210.

Ph. No. :(0261)2272245/2278875

Fax No. :(0261)2278875.

Email: samodi@modi-gujarat.com, pgmodi@modi-gujarat.com, sales@modi-gujarat.com

Website :www.modi-gujarat.com & www.indiamart.com/shreemodi

THANK YOU!